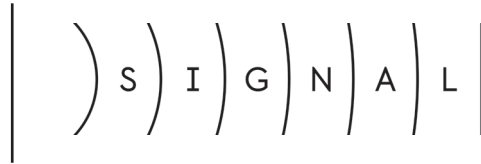




Watershed
Community Development



Elements Art Plan

February 2025

Project Team

Watershed Community Development *Community Development Partners*

Richard Conlin
Amber Larsen
Ben Rankin
Jen Trujillo

Signal Architecture + Research *District Planners*

Mark Johnson
Joe Sadoski
Lorine Moellentine

MxM Landscape Architecture *Streetscape Vision*

Brice Maryman
Scott Melbourne

Art Curators *District Art Planning*

Tamar Benzikry
Cath Brunner

Jackson Main Architecture *Elements Block Architects*

Che Fortaleza

TWG Development *Elements Block Developer*

Megan Adams

Content

Overview	4-7
Facade Mural	8-9
Art Fence	10-11
Mews Art Walls	12-13
Lobby Art Walls	14-15
Lobby Light	16-17
Courtyard Art Walls	18-19
Meander Murals	20-21
Elevator Landings Art	22-23
<hr/>	
Kit of Parts	24-27



Elements Massing: view from Southeast featuring mural by Mari Shibuya on the facade and fence by Tabasco Mills at the courtyard edge

Overview

Art Site	Location	Floor
1 Facade Mural	Exterior	Level 3-8
2 Art Fence	Exterior	Level 1
3 Mews Art Walls	Exterior	Level 1
4 Lobby Art Walls	Interior	Level 1
5 Lobby Light	Interior	Level 1
6 Courtyard Walls	Exterior	Level 1-2
7 Meander Murals	Exterior	Level 1
8 Elevator Landing	Interior	Level 1-9

Executive Summary

As the debut building in The Bend Live-Work District, Elements on 4th Avenue South, between South Brandon and South Lucile streets, sets the artistic expression and models the art-centered design for the district. Featuring captivating art visible from a distance and up close, it will warmly welcome residents and visitors, establishing an immersive experience across the entire canvas of the new locale.

The Elements Art Plan is intended to work in concert with the overarching District Plan recommendations for the Art as Convener commitments, which will steer the comprehensive development of the district. Its detailed art opportunity descriptions are built on the foundational vision of the themes and threads, diversity of types of artistic disciplines, and immersive aesthetic experiences articulated in the District Plan and further amplified in the Know Your Neighbors artists' interviews and Cookbook of the Street.

This is the first building art plan; however, a bespoke art plan will emerge for each building in The Bend development as a dynamic document. These living blueprints will evolve in tandem with each building's development, fostering integrated coordination and streamlined documentation among architects, developers, construction teams, and artists.

The Elements Art Plan provides the framework for realizing art that is poised to transform ordinary spaces into realms of personal expression, collective storytelling, place-making, and place-keeping.

Images included in this plan are designed to inspire and inform and are not intended to recommend specific artists for a commission opportunity

Level 1



Key

- 2 Art Fence
- 3 Mews Art Walls
- 4 Lobby Art Walls
- 5 Lobby Light
- 6 Courtyard Art Walls
- 7 Meander Murals
- 8 Elevator Landings Art

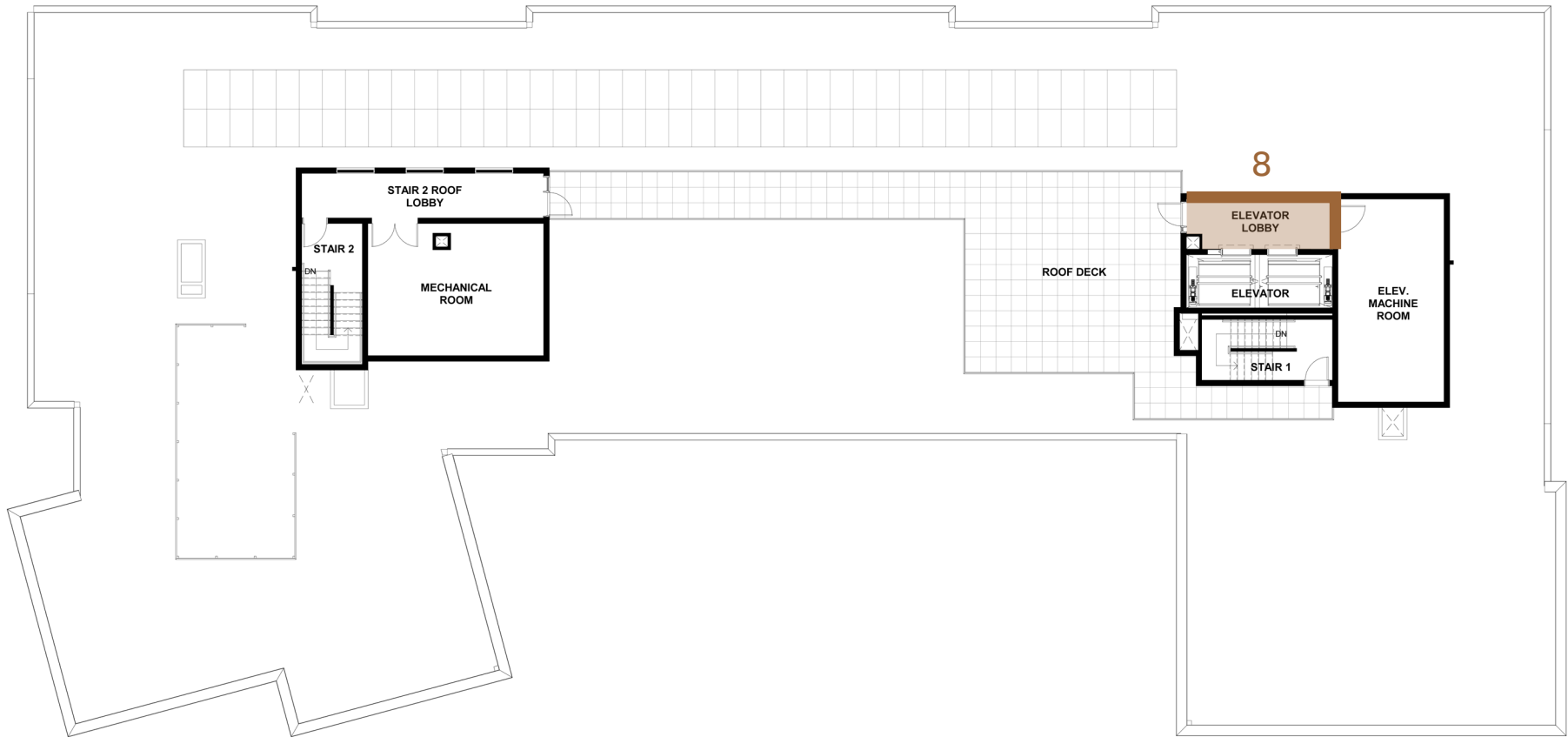
Level 3-8



Key

- 1 Facade Mural
- 8 Elevator Landing Art

Roof



Key

8 Elevator Landing Art

1: Facade Mural

Building Material: Ceraclad Panels

Artistic Medium: Painted Mural

Scale: ~322'8 Wide x 57' Tall

Artist: Mari Shibuya

Description

A large-scale mural will wrap multiple planes of the building exterior, transforming the facade into an artwork that honors the history of the Duwamish valley.

Inspired by historic photographs and contemporary community engagement, the mural will chart the changing course of the Duwamish River and map metaphors of collective creativity.

Infrastructure Requirements

- Surfaces fit for painting, printing and UV coating
- Installation and attachment mechanisms that do not obstruct artwork legibility

Coordination Requirements

- Final art placement, edges, and transitions
- To-scale mockup
- Art, construction and installation sequencing and schedule
- Scaffolding, swing stage, and/or lifts to facilitate mural implementation

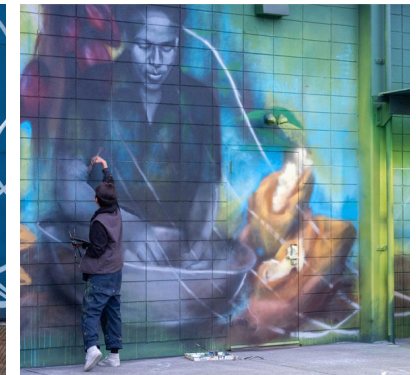
Artist Biography

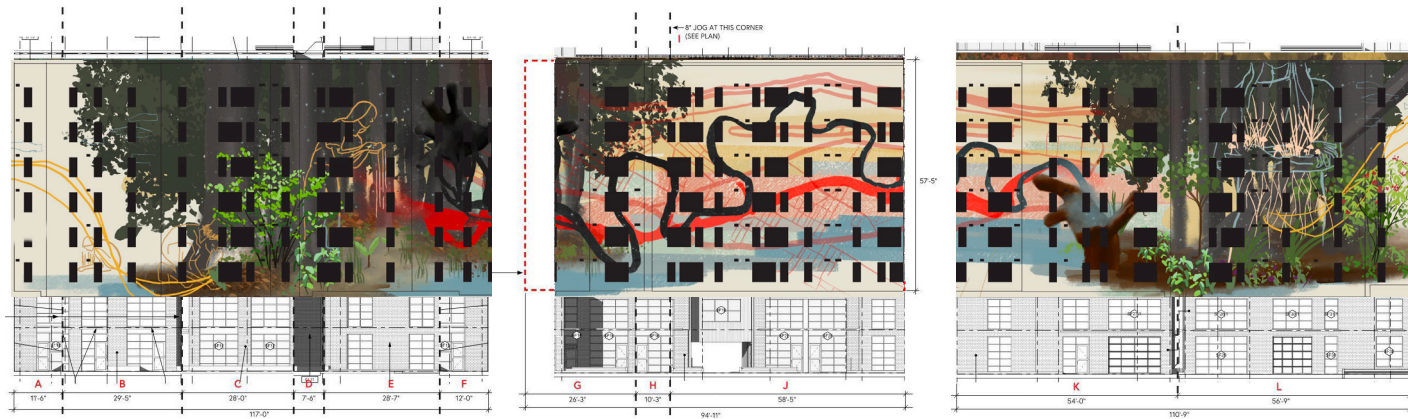
My goal within all that I create is to highlight the regenerative, healing power of Creativity and Community.

I focus on the wisdom inherent within our interconnection, the power of visual information, and the importance of reimagining growth through an equitable and liberatory lens.



Past work by Mari Shibuya
marishibuya.com





Early Mockup - NTS



All dimensions to be verified with Architect's Contract Documents
- these plans and elevations are for reference only.

2: Art Fence

Artistic Medium: Hand-forged steel, paint

Scale: ~65'10 Wide x 10'11 Tall

Artist: Tabasco Mills

Description

An art fence that combines form and function will welcome residents, visitors and passerby to the building.

A combination of fixed and operable (hinged/pivot) steel panel fence. The operable panels will consist of three large doors that open during business hours/events and close for a secured courtyard. The middle large door panel would have an appropriately sized egress door within it with hardware meeting code required exiting. Vegetated and irrigated for planters along fence with room for plants to grow along/up fence.

Infrastructure Requirements

- Foundations for fence posts
- Electrical for fence mounted lighting

Coordination Requirements

- Hardware and operations requirements
- Width of door openings and planters
- Fence post foundations and locations
- Fence post and planter design
- Planter boxes locations
- Stub outs for irrigation lines
- Egress door requirements
- Lighting locations

Artist Biography

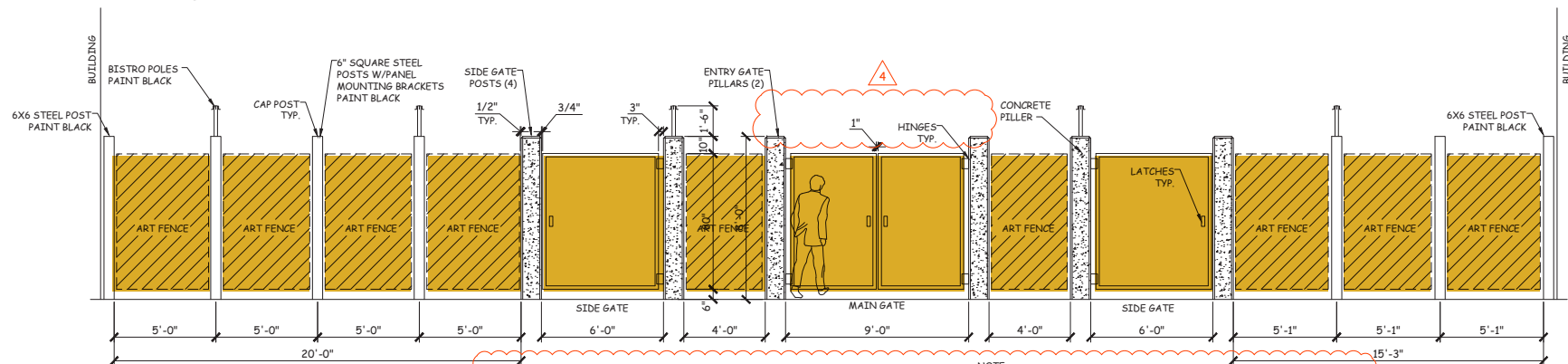
Since 2001, Tabasco Mills has been crafting unique metal art, blending traditional blacksmithing techniques with a modern sensibility. He's the owner of The Blacksmith Shop and the founder of the Iron Monkeys, a Seattle-based collective of metalworkers who believe art should be an experience, not just a display. Imagine intricate patterns forged from heavy steel, organic lines inspired by nature, and a touch of the unexpected. Tabasco and the Iron Monkeys are all about creating art that sparks conversation and invites interaction. They ask, 'How can we make people feel with our work?' - and then they go out and make it happen



Past work by Tabasco Mills
theblacksmithshop.com
ironmonkeyarts.org



Concept Elevation

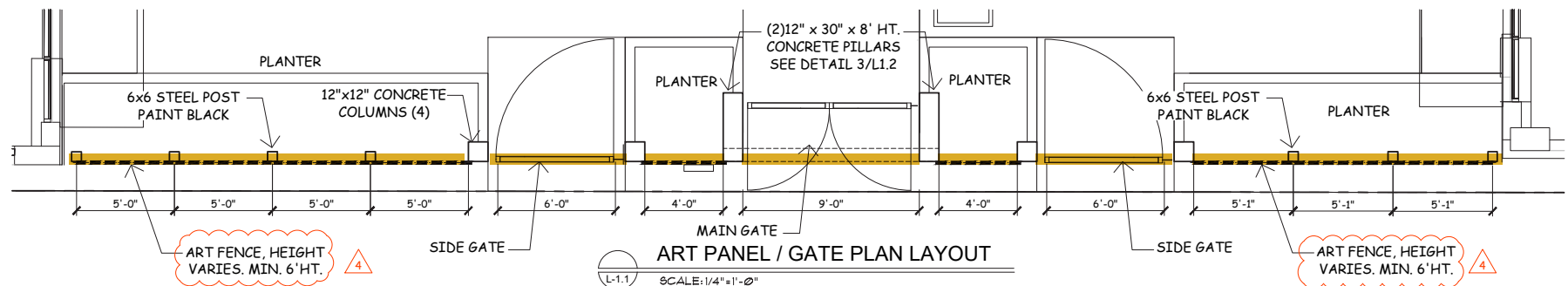


ART PANEL / GATE ELEVATION

SCALE: 1/4" = 1'-0"

NOTE: REFERENCE SHEET 10.02 FOR ARTIST'S FENCE DESIGN

NOTE:
PER MUP CONDITIONS #2
THE DECORATIVE PANELS SHALL HAVE A MINIMUM 60% TRANSPARENCY
ACROSS MULTIPLE BESPOKE PANELS, ENSURING HIGH VISIBILITY FROM PUBLIC
ROW ONTO PRIVATE COURTYARD SPACE. ART FENCE SHOP DRAWINGS SHALL BE
APPROVED BY SEATTLE DEPARTMENT OF CONSTRUCTION AND INSPECTIONS
(SCDI) BY AN ASSIGNED LAND USE REVIEWER PRIOR TO INSTALLATION. REFER
TO ARCHITECTURAL SHEET A10.02 FOR DETAILED GATES AND PROPOSED ART
FENCE INSTALLATION.



ART PANEL / GATE PLAN LAYOUT

SCALE: 1/4" = 1'-0"

All dimensions to be verified with Architect's Contract Documents
- these plans and elevations are for reference only.

North ▲

3: Mews Art Walls

Surface Material: Art-ready Substrate

Artistic Medium: Paint, sculptural materials (wood, metal) integrated lighting, sound, video

Scale: ~27'8" Wide x 9'8" Tall; ~2'5" Wide x 9'8" Tall; ~23' Wide x 9'8" Tall

Artist: To Be Selected

Description

Designed to draw pedestrians through each building and connect the streetscapes that will comprise the Live/Work District, art in the Mews will pull people through its special spaces.

Art will activate up to 2 walls in the Mews walkway of this building. It may take form as direct application, surface mounting and/or low relief sculpture.

Infrastructure Requirements

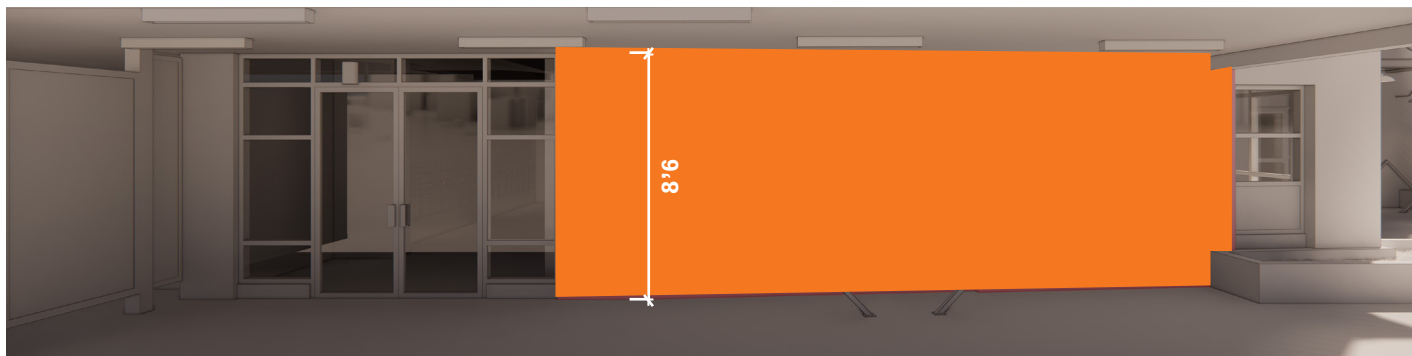
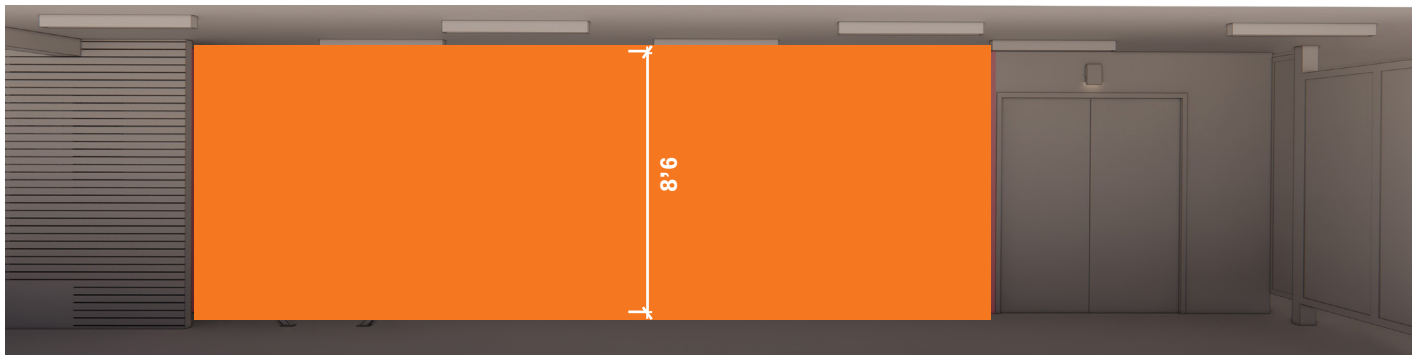
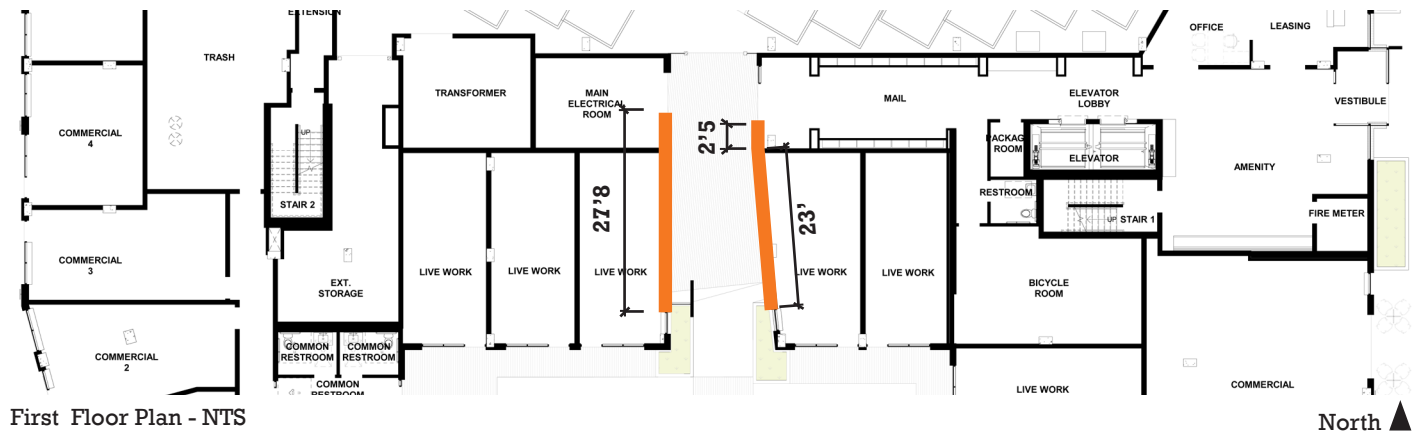
- Aluminum or stainless steel standoffs
- Rough-in electrical and data ports for audio/visual for art
- Electrical outlets in middle of each wall
- Outdoor rated and tamper proof
- Lighting

Coordination Requirements

- Extents of art piece
- Lighting in mews ceiling
- Location of standoffs
- Location of electrical/data ports
- Weight bearing capacity
- Lighting specs and locations



Fumi Amano
Link, 2022
Repurposed lampshades, glass, plywood, LED lighting
MetaOpenArts



All dimensions to be verified with Architect's Contract Documents
- these plans and elevations are for reference only.

4: Lobby Art Walls

Wall Material: Level 4 Finish

Artistic Medium: Paint, Print, Sculpture, Digital and/or Light Art

Scale: ~79'2" Wide x 10' Tall

Artist: To Be Selected

Description

As residents and visitors enter the building they will be greeted by a lobby that welcomes them with artworks that honor Indigenous voices, tell stories of Seattle's people, land and waterways, and share the history of Georgetown. Artwork will be on up to 4 walls.

Infrastructure Requirements

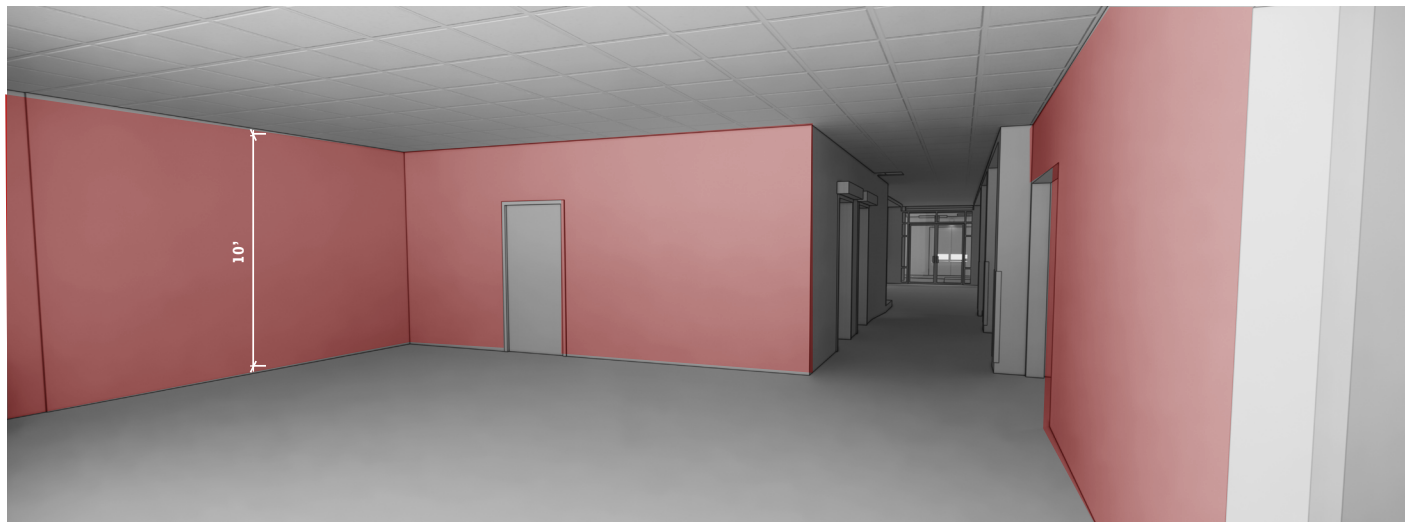
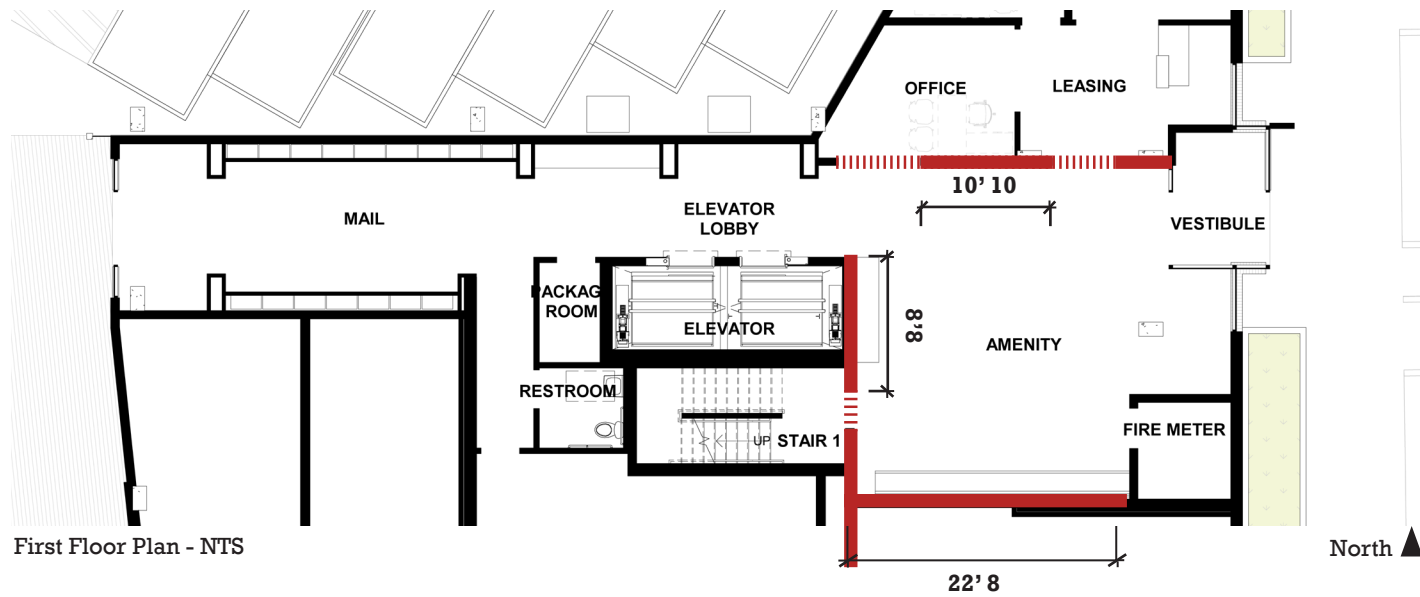
- Level 4 finish
- Backing
- Electrical access
- Attachment at any point on walls indicated to right
- Electrical outlets in middle of each wall

Coordination Requirements

- Lighting
- Furnishing
- Interior finishes
- Verify that concrete walls allow attachment at any point
- Verify that framed walls w/ GWB finish have backing to allow for attachment at any point
- Flooring materiality



RYAN! Feddersen
Antecedents, 2020
Dye sublimated image film, tempered glass, stainless steel, LED lighting
Washington State Arts Commission in partnership with the University of Washington



All dimensions to be verified with Architect's Contract Documents
- these plans and elevations are for reference only.

5: Lobby Light

Artistic Medium: Light fixture, material to be determined

Scale: ~2'x2' Wide x 6' Tall

Artist: To Be Selected

Description

There is a small, but prominent, area in the entry lobby that is visible within the building and from the street. The light fixture(s) planned for this area will offer the opportunity to showcase artist-made functional building parts in the form of lighting. The Pacific Northwest region and Equinox Studio/Georgetown/Duwamish Valley area of Seattle is home to many artists, artisans and small-scale custom manufacturers engaged in creating one-of-a-kind lighting solutions and this artwork will help celebrate that creative workforce.

Infrastructure Requirements

- Backing
- Electrical access

Coordination Requirements

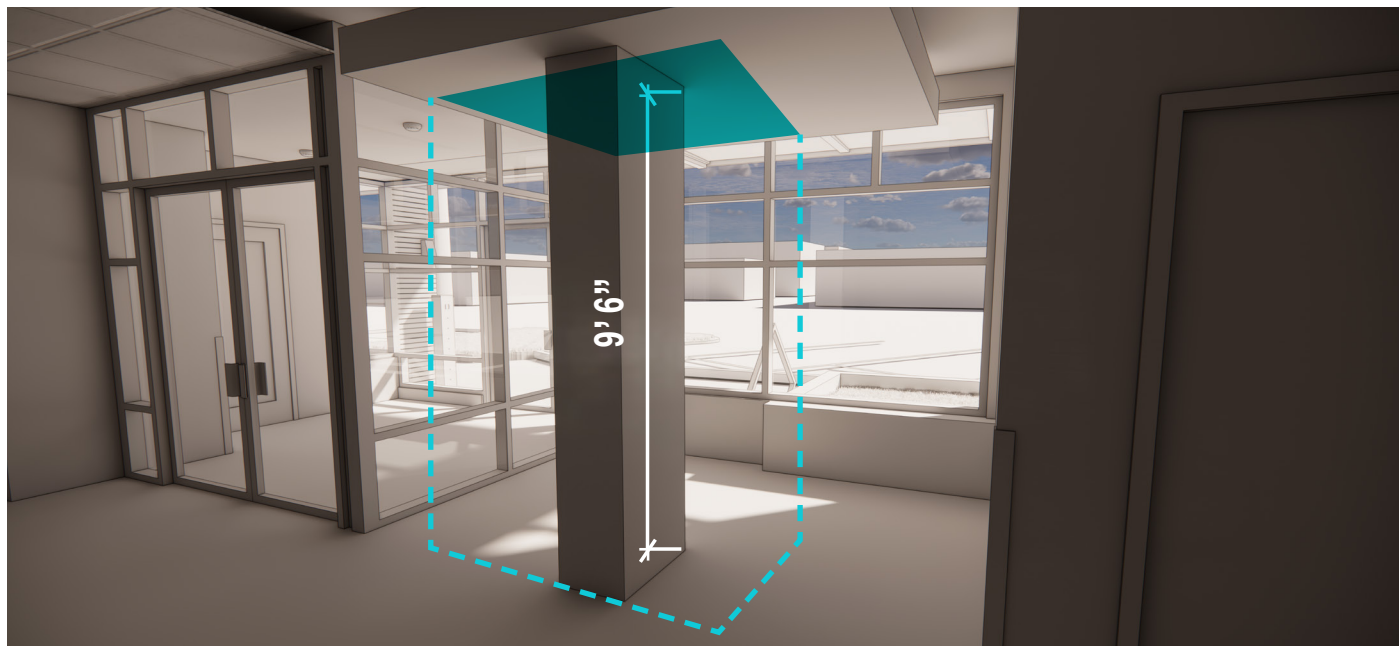
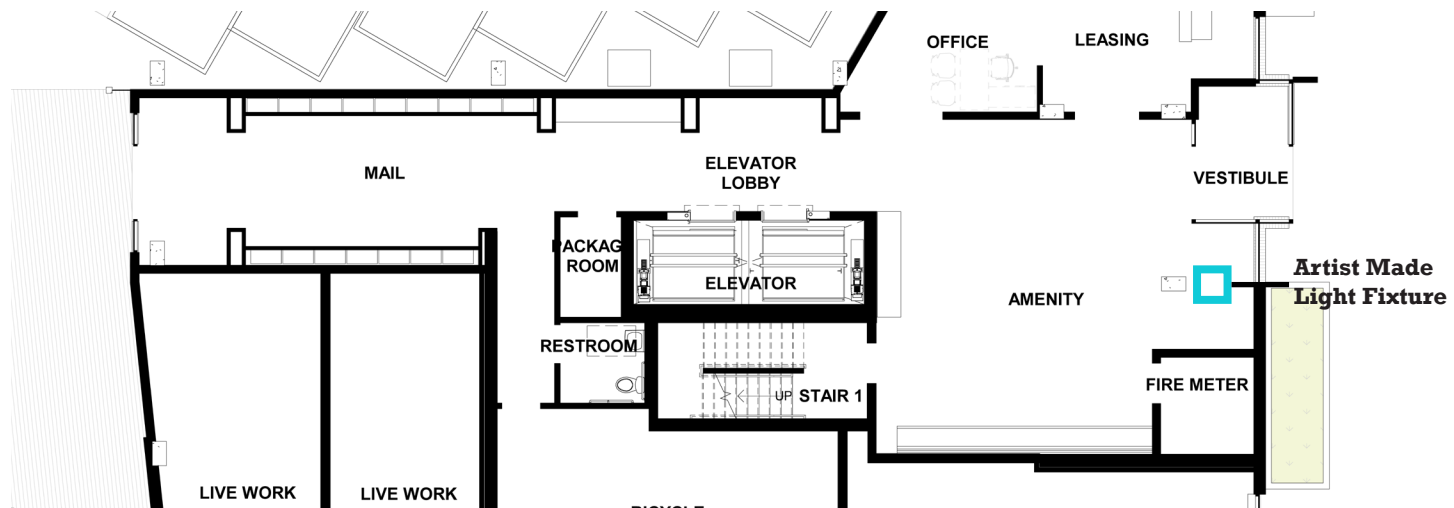
- Lighting



Graypants
Murmuration Chandelier



Yuri Kinoshita
"Mai Mai Mai" The Corson Building
Restaurant, Seattle



6: Courtyard Art Walls

Building Material: Metal armature capable of displaying rotating banner or panelized artwork

Artistic Medium: Digitally printed sustainable banner material, painted or printed wood or metal

Scale: ~6'8 Wide x 15'2 Tall

Artist: To Be Selected

Description

Two artworks offer an opportunity for curators to explore notions of pairs, duality, opposing ideas and constructs on this outdoor “exhibition” designed to rotate artworks quarterly. A metal armature attached to the building may be used for banner style artwork or a panelized application. The armature is permanent but the every changing artwork supports a variety of different artists’ perspectives and honors the commitment to participation, inclusion and active engagement.

These artworks are planned in response to feedback from the Design Commission to break up the building mass and solid masonry of its walls. Art will provide privacy for the live/work units while activating the street front.

Infrastructure Requirements

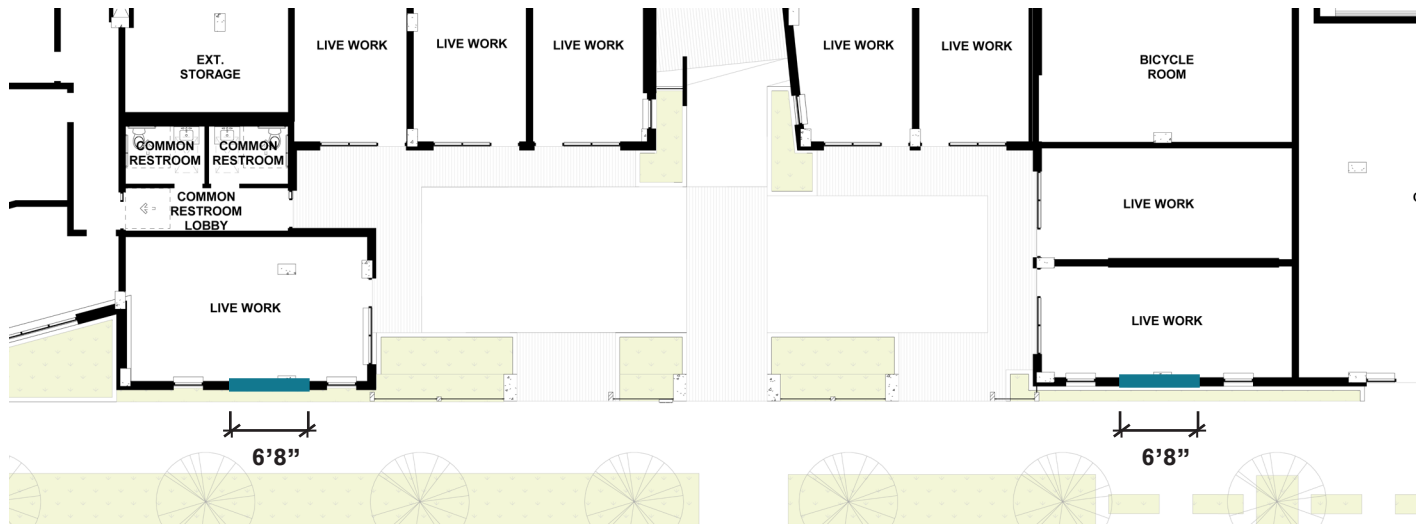
- Attachment points in masonry facade for display frames
- Lighting

Coordination Requirements

- Lighting specs and locations
- Attachment points and mechanisms in masonry facade
- Integration with masonry facade



The Frye Art Museum
Boren Banner Series
Rotating Art



First Floor Plan - NTS

North ▲



All dimensions to be verified with Architect's Contract Documents
- these plans and elevations are for reference only.

7: Meander Murals

Surface Material: Sealed Surface and Concrete Columns

Artistic Medium: Paint

Scale: ~179'9" Wide x 9'8" Tall; 11 24"x14" Columns

Artist: To Be Selected

Description

To activate the alley and turn "back of house" on its head, zones designated for parking will be programmed with art. Muralists will be invited to paint on all available surfaces - walls, columns and the ground plane.

Adding color to such everyday moments will enhance the sense of permeability and connection with the building's edges and the adjacent ROW. This will benefit the building's residents and draw people from 5th Ave South in to meander the Mews that will pass through the building.

This is an opportunity for a cohort of artists to work together on an immersive environmental approach.

Infrastructure Requirements

- Sealed concrete
- Lighting

Coordination Requirements

- Lighting specs and locations
- Paint specs and sealants
- Wayfinding signage



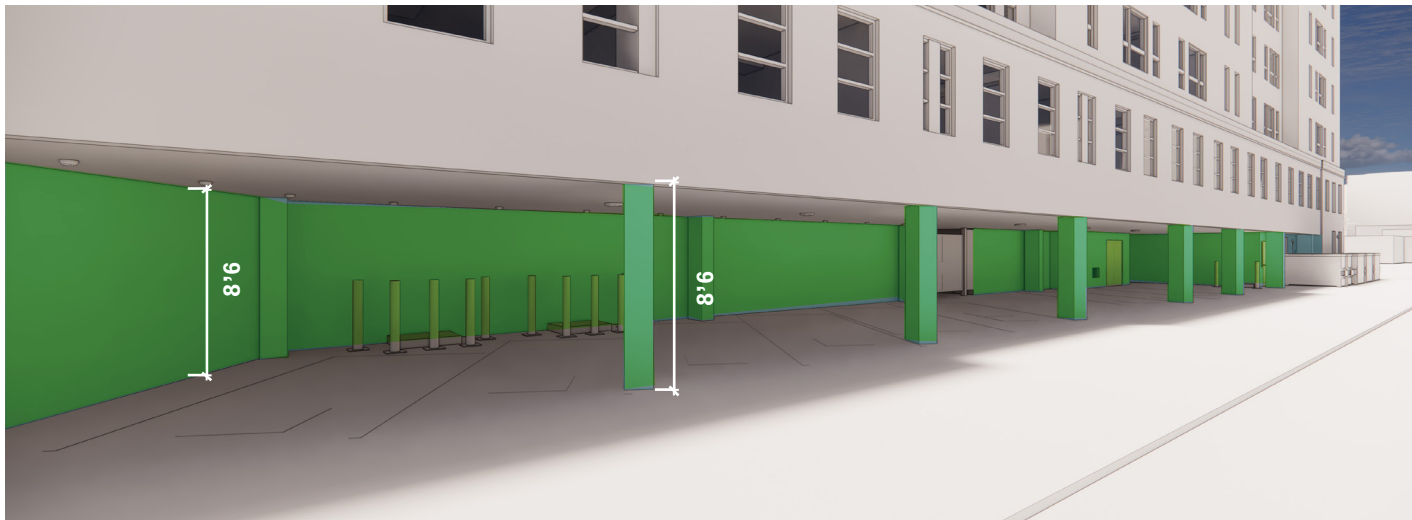
Angelina Villalobos Soto at work



Stevie Shao
Belltown Mural by Dan's



Craig & Karl.
HERE AFTER



All dimensions to be verified with Architect's Contract Documents
- these plans and elevations are for reference only.

8: Elevator Landing Art

Wall Surface Material: Level 4 Finish

Ground Surface Material: Concrete

Artistic Medium: Paint and Low-relief Applications

Scale: ~49'6 Wide x 10'1 Tall; ~42'4 Wide x 9'4 Tall; ~38 Wide x 8'8 Tall

Artist: To Be Selected

Description

The elevator landings present 9 unique yet connected opportunities for artists to transform the portal to each floor of the building. Each artwork will enhance wayfinding and will inform the color story of its floor.

Multiple surfaces will be available for each artist's consideration including walls, floors and/or ceilings. Artists may paint and add low-relief 2D and 3D elements to their installations.

Curators and selected artist will work with the environmental graphic designers to incorporate floor and unit numbering into the artwork solutions and implementation.

Infrastructure Requirements

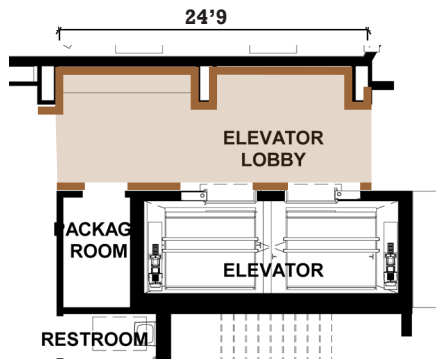
- Level 4 finish
- Lighting

Coordination Requirements

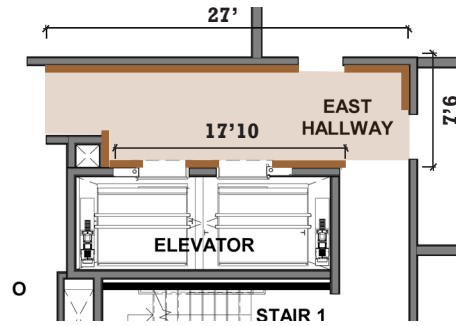
- Lighting specs and locations
- Load bearing capacity
- No additional signage



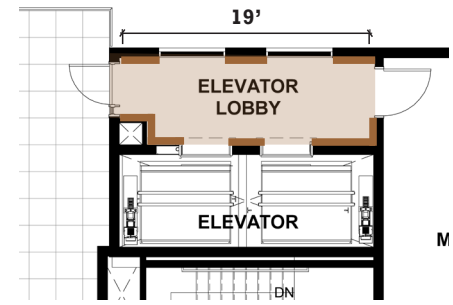
Romson Bustillo. *Amigo ako nimo*, 2022. Mixed media installation. Meta, Bellevue, WA. Meta Open Arts. Photos: Romson Bustillo. Courtesy of the Artist



1st Floor Plan - NTS

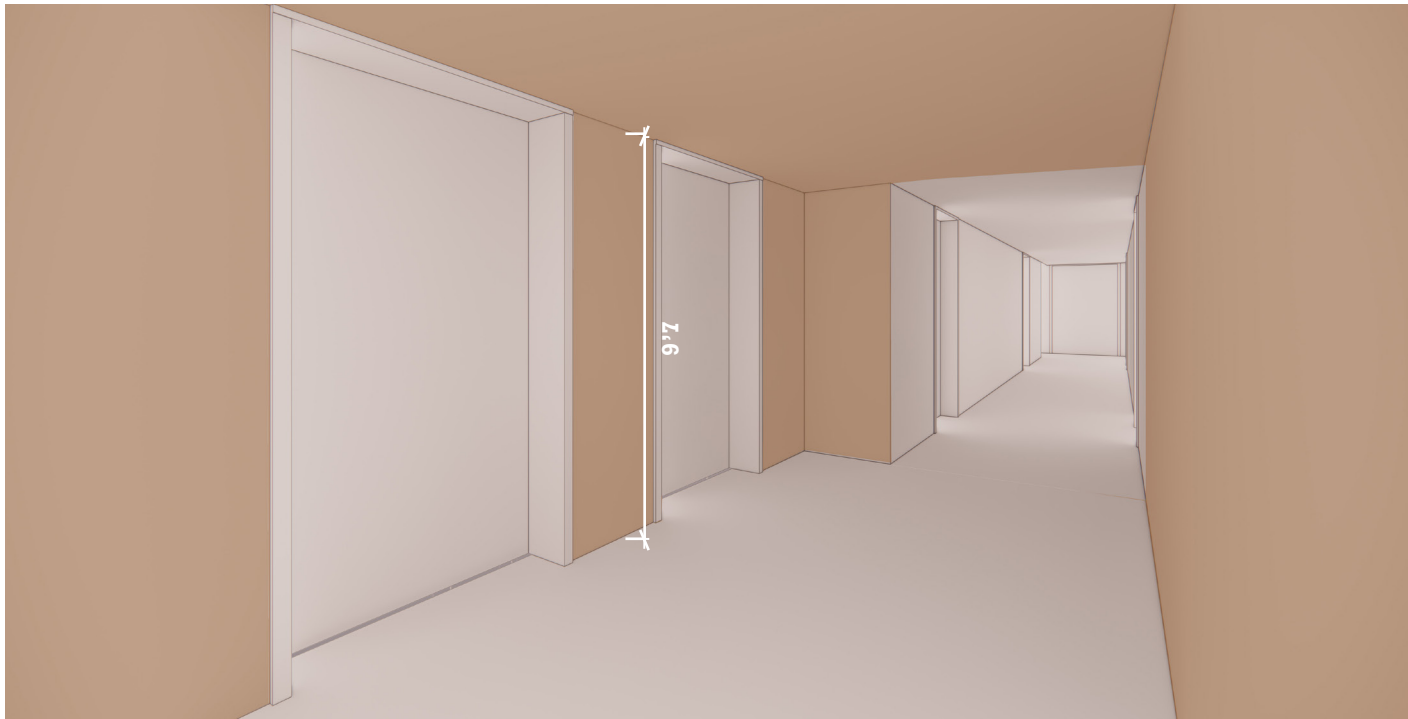


3rd - 8th Floor Plan - NTS



9th Floor Plan - NTS

North ▲



3rd - 9th Floor Typ.

All dimensions to be verified with Architect's Contract Documents
- these plans and elevations are for reference only.



9: Kit of Parts

The Bend District Plan identifies an opportunity called *KIT OF PARTS* intended to Incorporate custom furnishings and landscape and streetscape details that are beautiful, tactile and reveal an artist's hand to foster a unique sense of place and repeated custom elements that reinforce the district identity. A kit of parts crafted by an artist cohort will act as a practical resource for building a cohesive visual narrative that unfolds across the entire district.

Although the Elements block includes less open space and pedestrian area than the other two blocks (Oasis and Findlay) there are several opportunities to begin the work of the kit of parts cohort: movable planters, site benches, and bike racks.

9A: Movable Planters

Surface Material: Concrete, Metal, Recycled Container

Artistic Medium: To be Selected

Scale: ~3'x3' Wide x 3' Tall

Artist: To Be Selected

Description

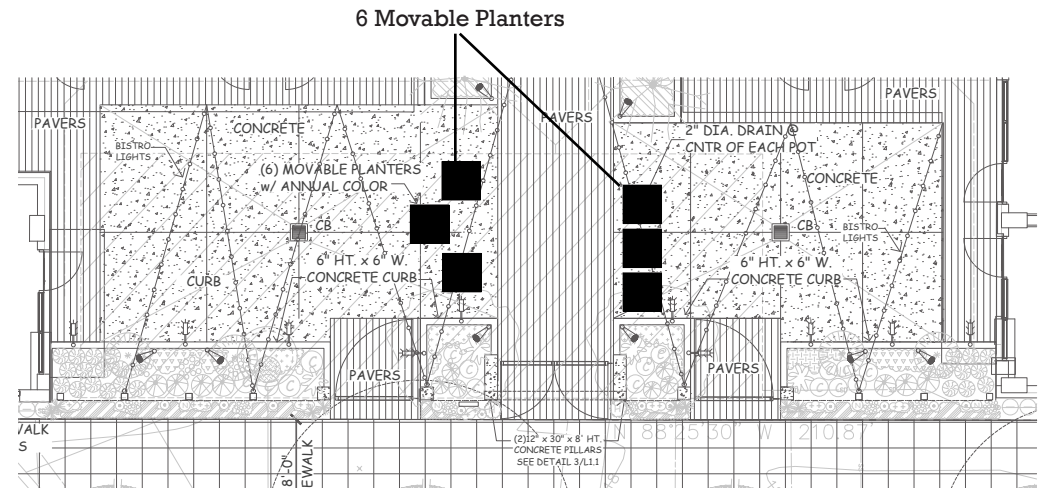
In the courtyard area of the Elements building, six movable planters flank the main entry. These planters can reinforce the entry experience and extend the aesthetic welcome of the façade mural, fence, courtyard walls and mews wall artworks. Small-scale art commissions like this also offer opportunities to artists eager to gain experience at designing, fabricating and managing a public art work.

Infrastructure Requirements

- Integrated irrigation
- Planting medium
- Mounted swivel casters with brakes. Up to 1,000 lbs load capacity

Coordination Requirements

- Irrigation connection location
- Landscape design



Callout from Elements Entry, Gate & Fence Plan - NTS



Jennifer Newman: Box Planter



Buster Simpson: Portable Landscapes



Octavia's Garden

9B: Benches

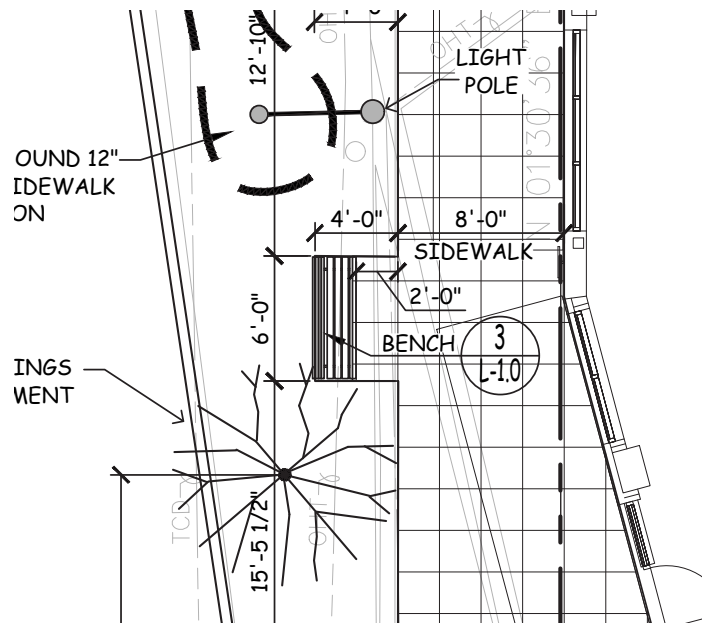
Surface Material: Hardwood, recycled timber, powder-coated or stainless steel, concrete
Scale: ~6'x4' Wide x 30" Tall
Artist: To Be Selected

Description

Located near the 4th Avenue bus stops, these benches serve those waiting for the bus or visiting the west commercial spaces of The Elements Building. The design will prioritize comfort and usability in this busy and prominent intersection, and set a language for future street furniture in the district.

Infrastructure Requirements

- Concrete Base for mounting



Plan Excerpt from Elements Hardscape Plan- NTS



Paul Sorey
Tree Bench, for the City of Seattle Pratt Park



Jeppe Hein
Modified Social Benches for Venice

9C: Bike Racks

Surface Material: powder coated steel, stainless steel, recycled material

Scale: 1' Wide, up to 10' long depending on location, 36" Tall

Artist: To Be Selected

Description

These artist-designed bike racks will provide secure bicycle parking while enhancing the feeling of the streetscape. The design should move beyond purely functional racks and become a piece of public art, reflecting the character of the surrounding area. The racks should accommodate a variety of bike types and sizes, while also being durable enough to withstand weather and heavy use.

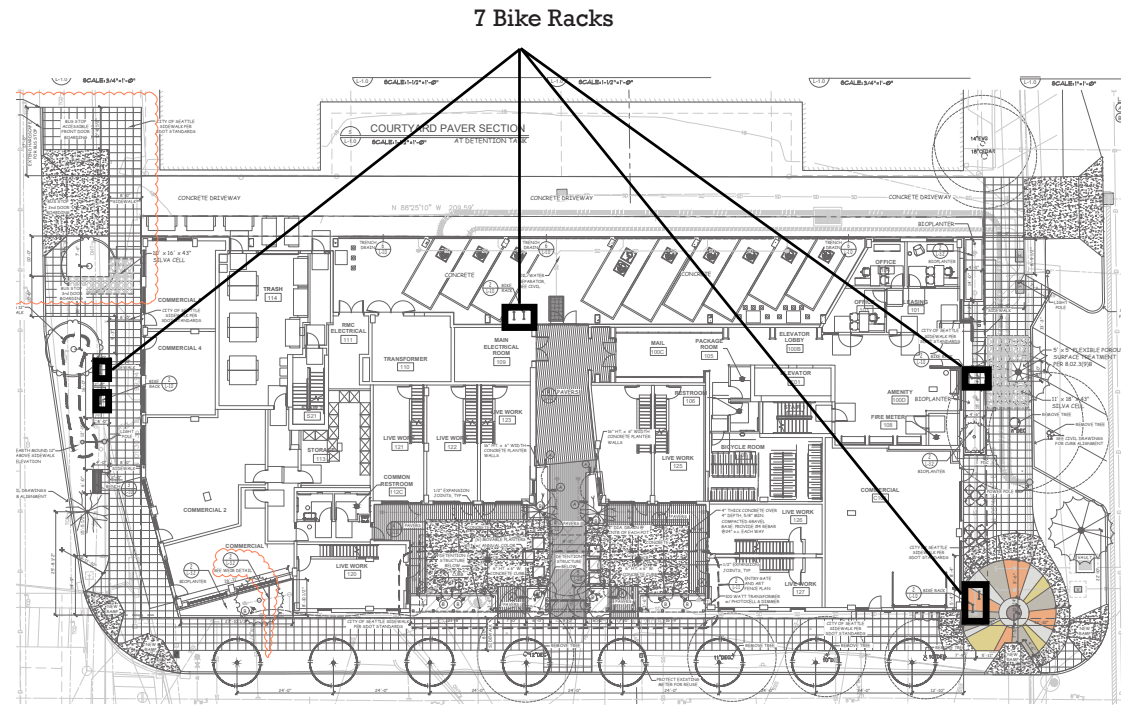
Each rack should accommodate at least two bicycles and be anchored to the ground. Rack should have elements that can accommodate various lock sizes.

Infrastructure Requirements

- Concrete base to anchor rack to ground

Coordination Requirements

- Bike rack base sizes and locations on site



Plan Excerpt from Elements Hardscape Plan- NTS



Zach Duensing
Shelves, Nashville, TN



Susan Robb
Parking Squid, Seattle, WA

